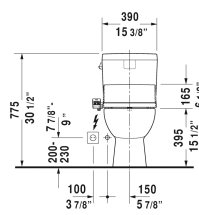
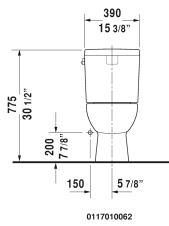
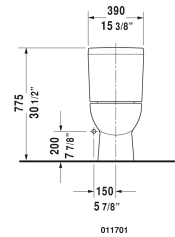
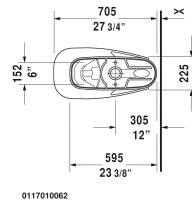
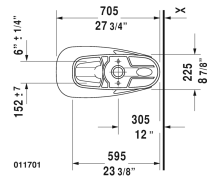
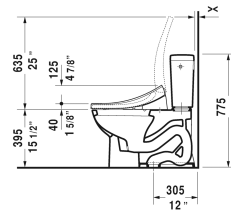
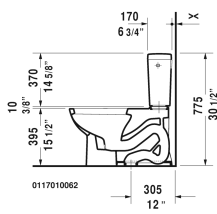
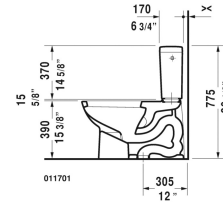
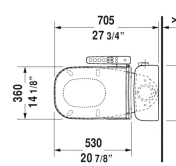
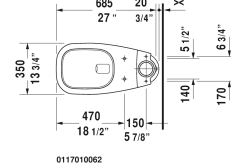
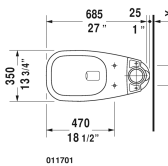


## D-Code Two-Piece toilet # 011701..62

< 13 3/4" Inch >



Two-Piece toilet	Dimension	Weight	Order number
(without tank), US-version toilet, syphonic, 12" rough-in, vertical outlet, cUPC listed			
<b>Colors</b>			
00 White 20 HygieneGlaze (an antibacterial ceramic glaze that provides almost indefinite effectiveness)			
<b>Variant</b>			
♣ 1.28 gpf	13 3/4" x 27" Inch	57.6 lb	011701..62
Mounting set for One-piece and Two-piece toilets, 1/2", US-version		1.1 lb	001431
<b>Suitable products</b>			
Toilet seat and cover elongated, hinges stainless steel, without slow close,			006741
Tank with Single Flush mechanism, with side lever, 3" flapper valve, bottom left supply, cUPC listed, 1.28 gpf, 15 3/8" x 6 3/4" 15 3/8" x 6 3/4" Inch			092720
Toilet seat and cover elongated, hinges stainless steel, removable, with slow close,			006209

D-Code Two-Piece toilet # 011701..62

|< 13 3/4" Inch >|

---

*All drawings contain the necessary measurements which are subject to standard tolerances. They are stated in inch & mm and are non-binding. Exact measurements, in particular for customized installation scenarios, can only be taken from the finished ceramic piece.*